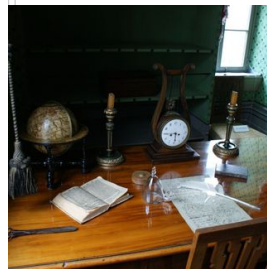
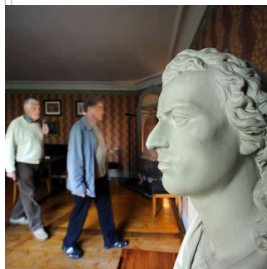
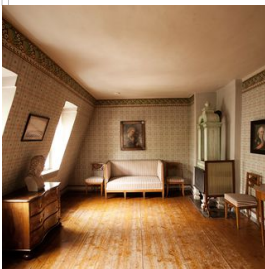


## SCHILLER RESIDENCE



Friedrich Schiller spent the last three years of his life in this townhouse on the former Weimar Esplanade. Still containing part of the original furnishings, it reflects the style prevalent in Schiller's day. It was here that Schiller wrote his last great dramas such as "The Bride of Messina" and "William Tell". In the 1980s, a museum dedicated to Schiller was built as an annex, providing more space to depict his life, works and impact. The frequently changing exhibitions provide an opportunity to study the writer in greater detail.



### Information

#### OPENING HOURS



Until 29 March:  
Tue - Sun 9:30am - 4pm

29 March - 30 October:  
Tue - Sun 9:30am - 6pm

31 October - end of year:  
Tue - Sun 9:30am - 4pm

closed on Mon

Advance booking regulation at the Tourist Information Weimar: Advance booking for the next 3 days only (time slot tickets)

#### ADDRESS

Schillers Wohnhaus  
Schillerstraße 12  
99423 Weimar

Fon: 03643 / 54 54 00

Fax: 03643 - 41 98 16

✉ E-Mail

🌐 Website

📍 show map

